

# LOGISTICS

*Proficiency in handling, loading and unloading pipe for the largest and most challenging projects*



# LOGISTICS

## Handling and Storage

Centrally located on the Gulf Coast, with over a mile of waterfront docks and six loading and unloading bulkheads, Bayou offers a convenient staging yard for all onshore and offshore projects.

Among Bayou's strongest assets is our unique ability to safely accommodate the most challenging pipe handling situations and our strategic access to multiple modes of transportation. Bayou has become proficient at handling, loading and unloading pipe to accommodate the largest and most challenging projects.

### New Iberia, Louisiana Facilities

- Over 250 acres of duty-free storage
- 6,000 linear feet of quayside
- 250-ton crawler crane
- 70-ton crawler crane
- 70-ton cherry pickers
- 14 wheel loaders
- Three excavators with vacuum lifter attachments
- Two bucket loaders
- Capacity to load over twenty-seven, 89-foot flat railcars within our facility each day

## Water

Bayou is equipped with enough equipment and handling personnel to professionally accommodate the most taxing of projects, including double joints, quad joints and pipe-in-pipe inserted joints.

### New Iberia, Louisiana Capabilities

- Access to the Intracoastal waterway, the Gulf of Mexico and international destinations
- Seven barge loading and unloading sites
- Can accommodate up to 100-foot by 400-foot barges

## Rail

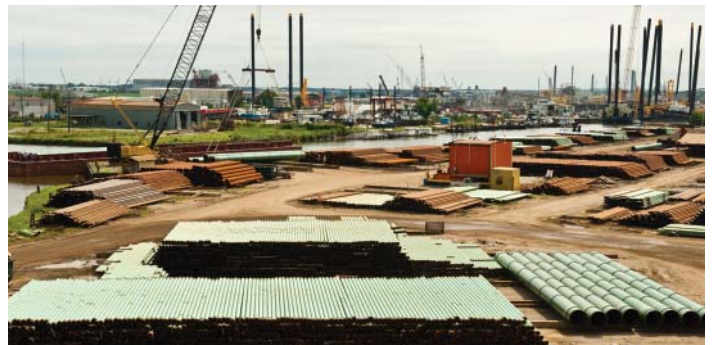
Bayou provides unique opportunities to effectively receive and load pipe for shipping on unit trains.

### New Iberia, Louisiana Facilities

- Serviced by the L & D, BNSF and UP railroad lines

## Truck

All of our facilities are able to accept and ship pipe via truck with great efficiency.



*An Aegion Company*

**The Bayou Companies, LLC**  
5200 Curtis Lane  
New Iberia, LA 70560  
337.369.3761  
[www.bayoucompanies.com](http://www.bayoucompanies.com)